

COMMUTE options

2019 ANNUAL REPORT



OUR MISSION

Commute Options actively promotes walking, bicycling, carpooling, teleworking, and using public transportation to create livable communities and enhance the quality of life in Central and Eastern Oregon. Through education and encouragement in 18 counties, our programs support individual wellness, a clean environment, and a strong economy.

2019 STAFF

Jeff Monson, *Executive Director*

Kim Curley, *Community Outreach*

Brian Potwin, *Active Transportation Manager*

Kersey Marion, *Walking School Bus & Volunteer Coordinator*

Kate Armstrong, *Education Coordinator*

Kathy King, *Special Projects*

2019 BOARD OF DIRECTORS

Gregg Morris, *Board Chair*

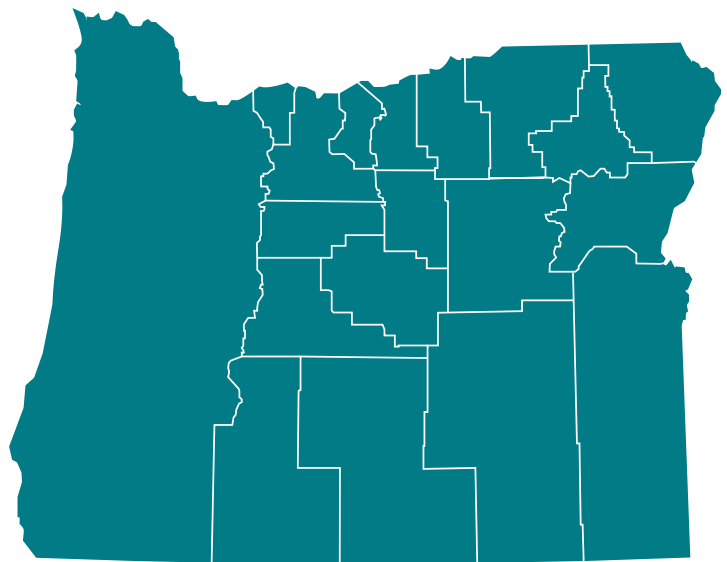
Marshall Greene, *Secretary*

Bill Caram, *Treasurer*

Janet Gregor

Emily Pelletier

James Cook



We work in Baker, Crook, Deschutes, Gilliam, Grant, Harney, Hood River, Jefferson, Klamath, Lake, Malheur, Morrow, Sherman, Umatilla, Union, Wallowa, Wasco, and Wheeler Counties

INTRODUCING



get there

The new face of one of our oldest programs, Get There provides ongoing incentives for employees at our partner organizations to walk, bike, carpool, telework, and use public transportation. In June of 2019, Drive Less Connect became Get There, a new app developed by RideAmigos. Get There improves user experience and flexibility when logging trips.



Incentives tracked on paper by St. Charles Health System

Drive Less Connect introduced Track trips online & in-app

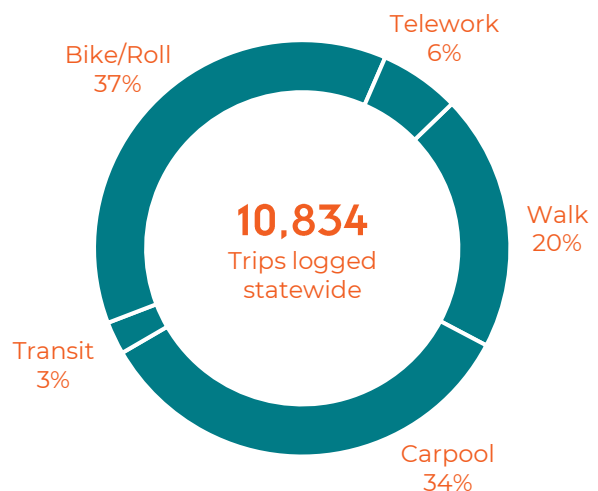
Get There introduced! Focus on improved UX

LESSONS LEARNED

Despite being a great improvement overall, the transition process to Get There was not without its glitches. The first notification to users of the change was an email sent the same day, and inactive users were moved to the new system automatically. This led to confusion among users when first interacting with Get There. Better communication of future changes will go a long way towards retaining users and encouraging participation.

2019 GET THERE CHALLENGE

From October 1 – 21, Oregonians across the state participated in the Get There Challenge, logging their trips and competing for prizes. As one of Oregon’s regional providers of Get There, we advertised the challenge and threw a party for the winners!

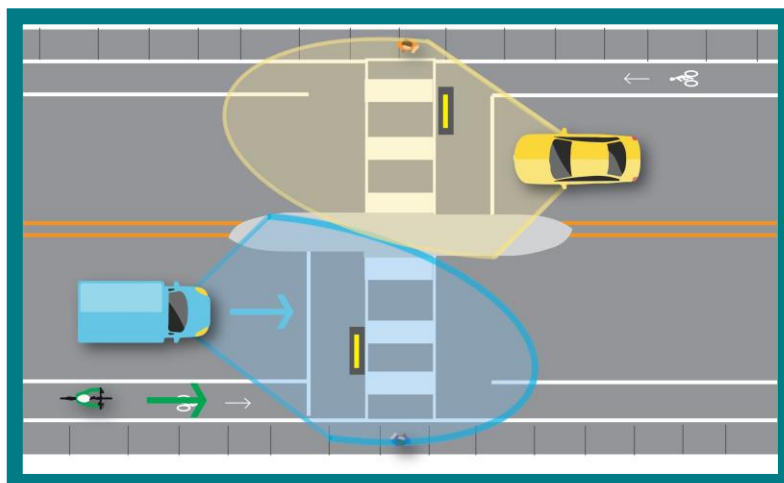




The **Oregon Friendly Driver** program is a 60-90 minute interactive class designed to educate drivers on the best and safest ways to use the road with people walking or riding bikes.



We worked with the **Street Trust** and the **Lane Council of Governments** to update the Friendly Driver curriculum and build a website for the state-wide program. The new website features slides from the presentation, helps advertise Oregon Friendly Driver to a wider audience, and helps visitors to schedule a class in their area.



Visit oregonfriendlydriver.org

SafeRoutes

Oregon Safe Routes To School



One of Commute Options' foundational programs, our Safe Routes to School program is part of a national network of providers bringing walking and biking education and encouragement to students. We do this through regular walking and bike safety instruction in classrooms across Central Oregon, as well as a few bigger events throughout the year.



SCHOOLS



STUDENTS



BIKE HELMETS

MAY CHALLENGE MONTH

We helped organize Walking Wednesdays and bike rodeos at 11 Schools throughout the month of May. We provided resources to teachers and distributed incentives provided by The Street Trust to schools. Thanks to the generous support of community sponsors like C.E. Lovejoy's, Thump Coffee, Newport Market, and Trader Joe's, we were able to bring tasty and nutritious snacks to many of our participants.

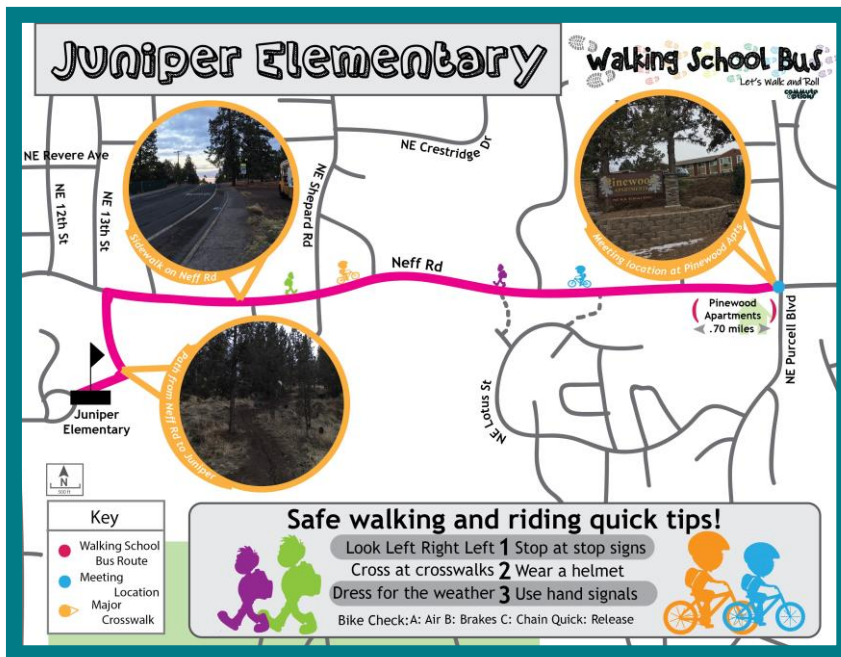
NATIONAL WALK & ROLL TO SCHOOL DAY

On October 2, 2019, we helped organize walk and roll events at 15 schools in Bend, Redmond, Madras, and La Pine.

Walking School Bus

Let's Walk and Roll

The Walking School Bus Program is a unique program funded through [Oregon Safe Routes to School](#), the [Central Oregon Health Council](#), and the [City of Bend](#). Many school districts around the country have organized special or one-off walking school bus events, but we're the only program that offers reliable walking routes each week. We employ and train dedicated WSB Leaders, who often live in the neighborhoods they serve. This way, our Leaders make a consistent and positive impact on their communities.



An example walking map along one of our routes in Bend

In the 2018-19 school year, we offered WSB routes at ten schools in Bend, Madras, and La Pine. In the 2019-20 school year, we narrowed our focus to five schools, with an emphasis on providing [ongoing comprehensive training](#) to the Leaders on issues like recognizing and reporting the signs of child abuse, as well as age-appropriate conflict resolution strategies.

Central Oregon Health Council
15%

Provides most of the funding for the Walking School Bus Program

City of Bend
12%

Provides funding for the Walking School Bus Program, Safe Routes to School, and Get There, as well as supporting employer outreach and Commute Options Partners

ODOT Transportation Options
39%

State contract that supports our administration of the Get There Program, Commute Options outreach, website & social media efforts, agency trainings, attendance at various committees and working groups, construction mitigation projects, and upkeep of park & rides throughout Central Oregon

Safe Routes to School TAP
12%

Supports us in helping agencies statewide with various non-infrastructure transportation projects

2019 FUNDING SOURCES

and How They Support What We Do

Safe Routes to School
6%

Funded through the ODOT Transportation Safety Division

Other
6%

Includes revenue from donations, merchandise, and sponsorships

DMV
5%

Funding related to an ODOT project to create Transportation Options Rider Info Packets, to be displayed in DMV locations across the state

Commute Options Partner Revenue
2%

Includes annual fees from the Commute Options Partner Program

Oregon Friendly Driver
2%

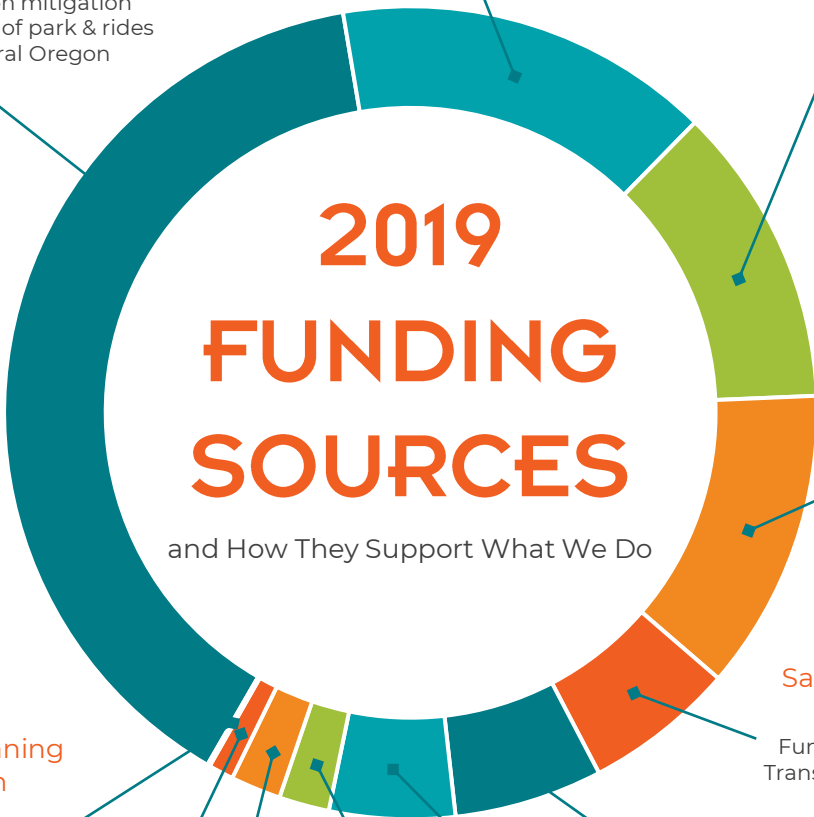
Funded through the ODOT Transportation Safety Division

Deschutes County
1%

Transportation Options funding for Central Oregon

Bend Metro Planning Organization
0.10%

Includes funding for the Walking School Bus Program





Left to Right: Brian Potwin, Kersey Marion, Jeff Monson, Kathy King, Al King, Kim Curley, Cody, Kate Armstrong, David Hopper

In 2019 we celebrated the retirement of our Executive Director, **Jeff Monson**, from a position he'd held since 2002.

We also celebrated the retirements of **Kathy King**, as well as board member **Jim Cook**.

THANK YOU!

